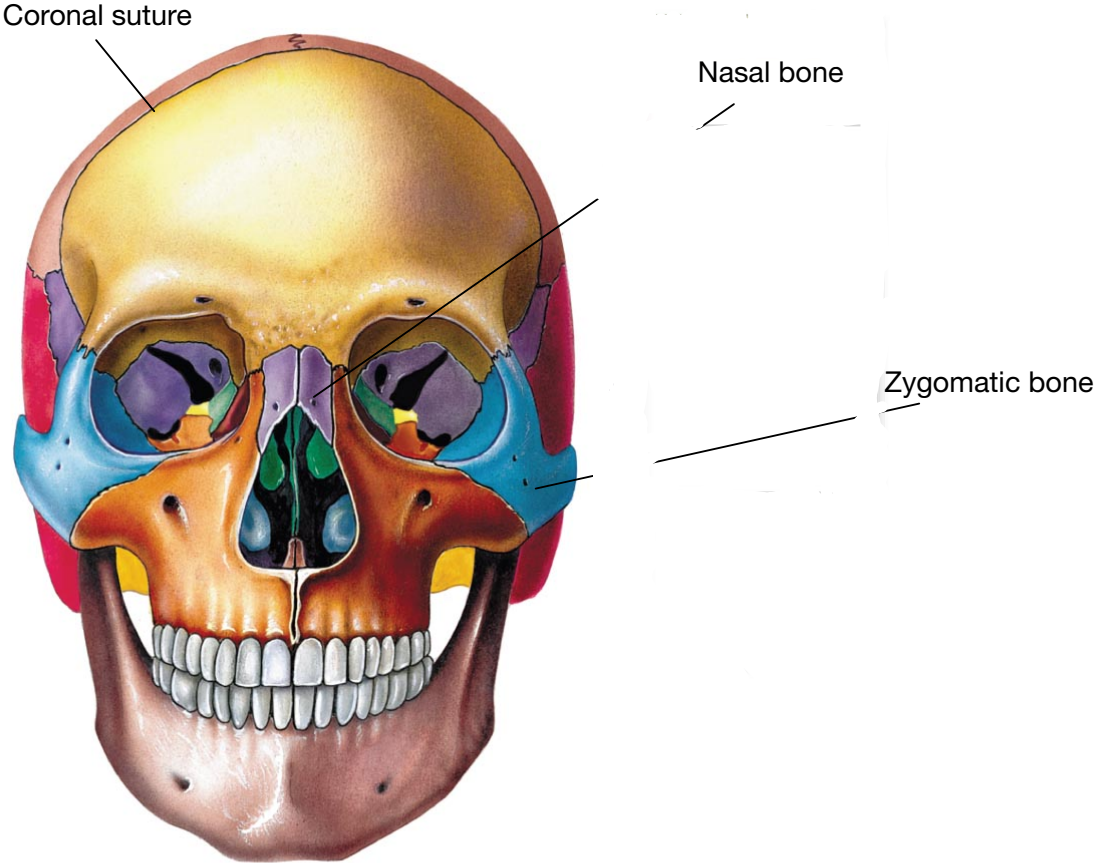
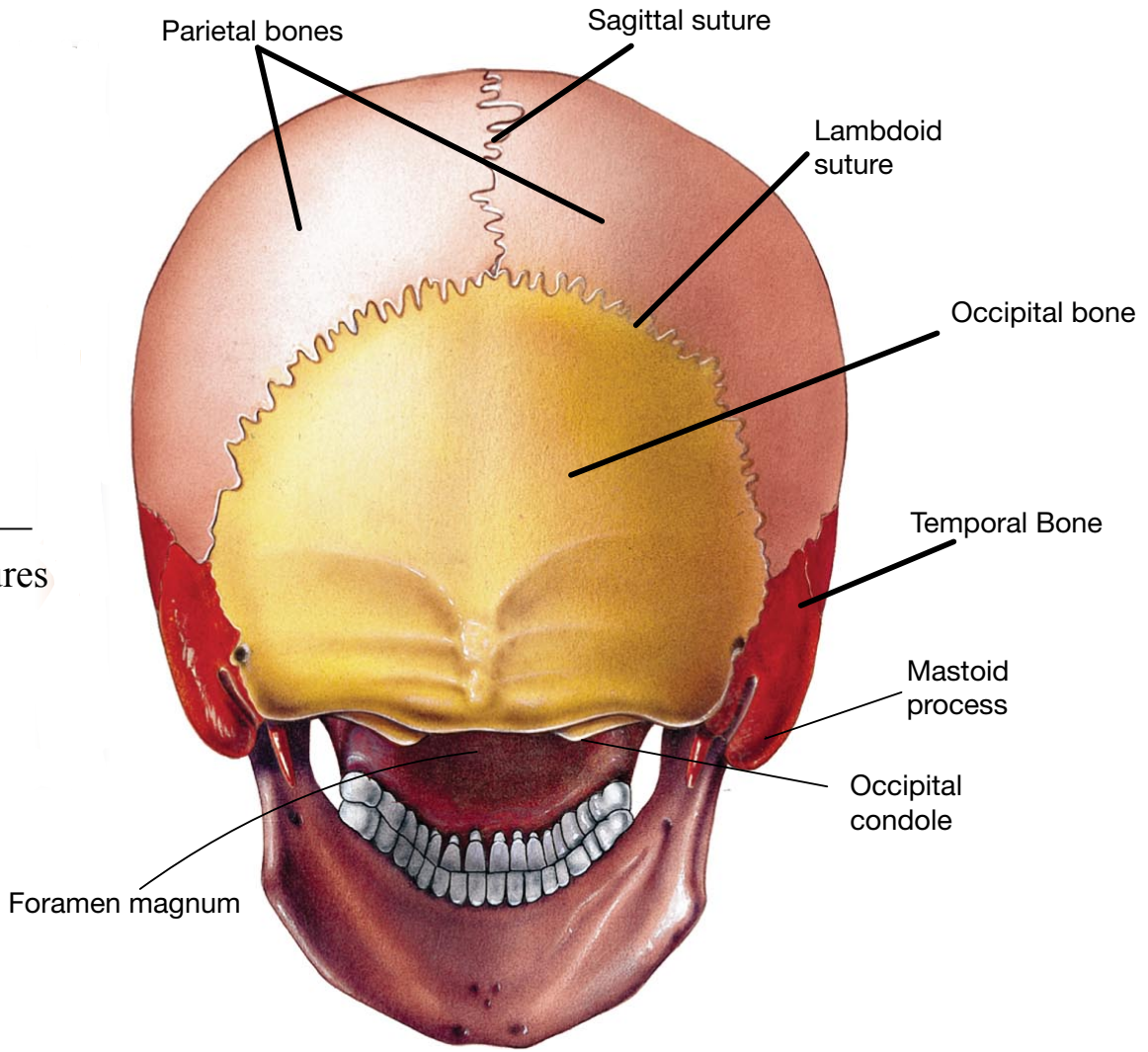


Label: nasal bone, zygomatic bone, coronal (frontal) suture on this diagram



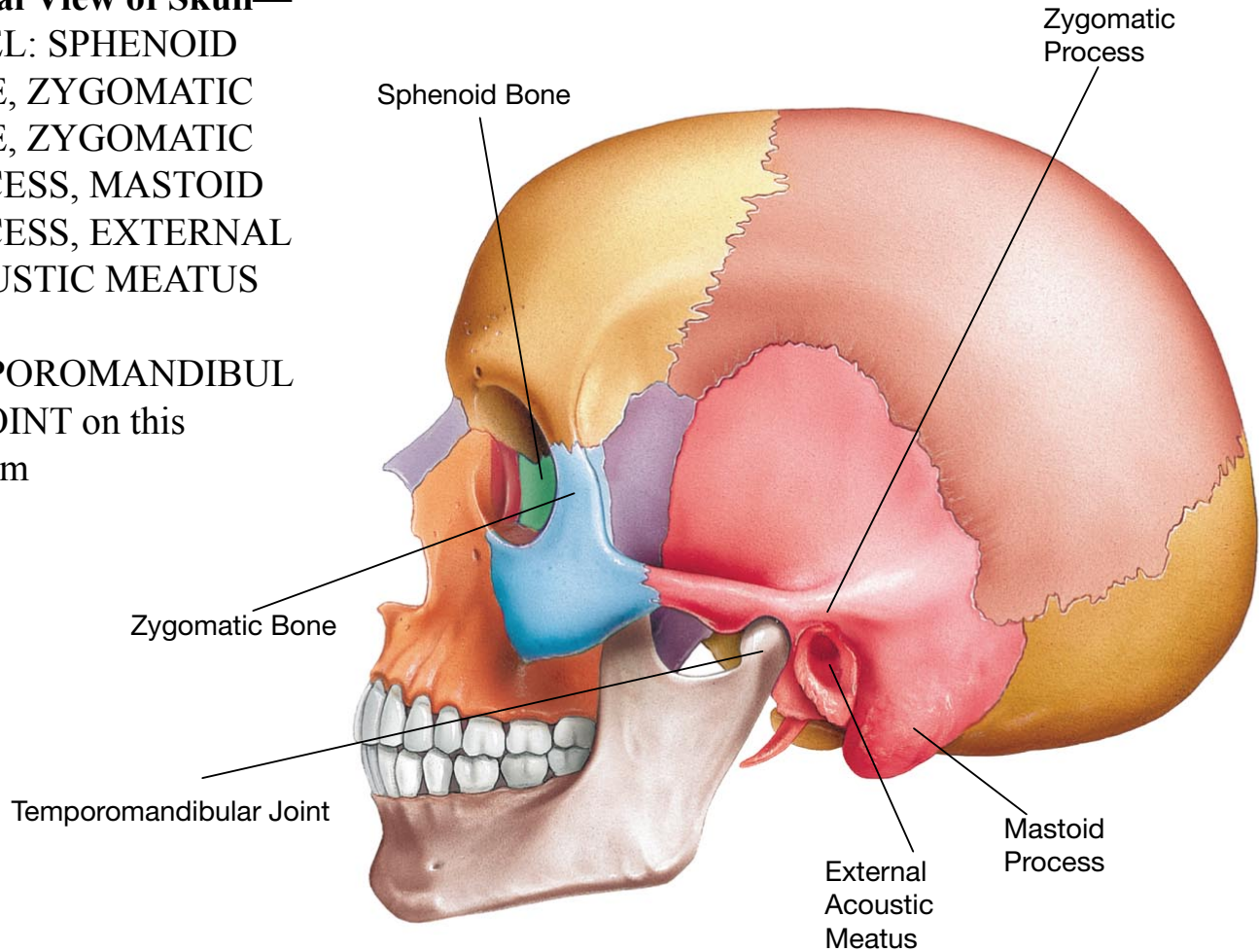
Anterior view of skull

Posterior View of Skull—
label ONLY visible sutures
on this diagram

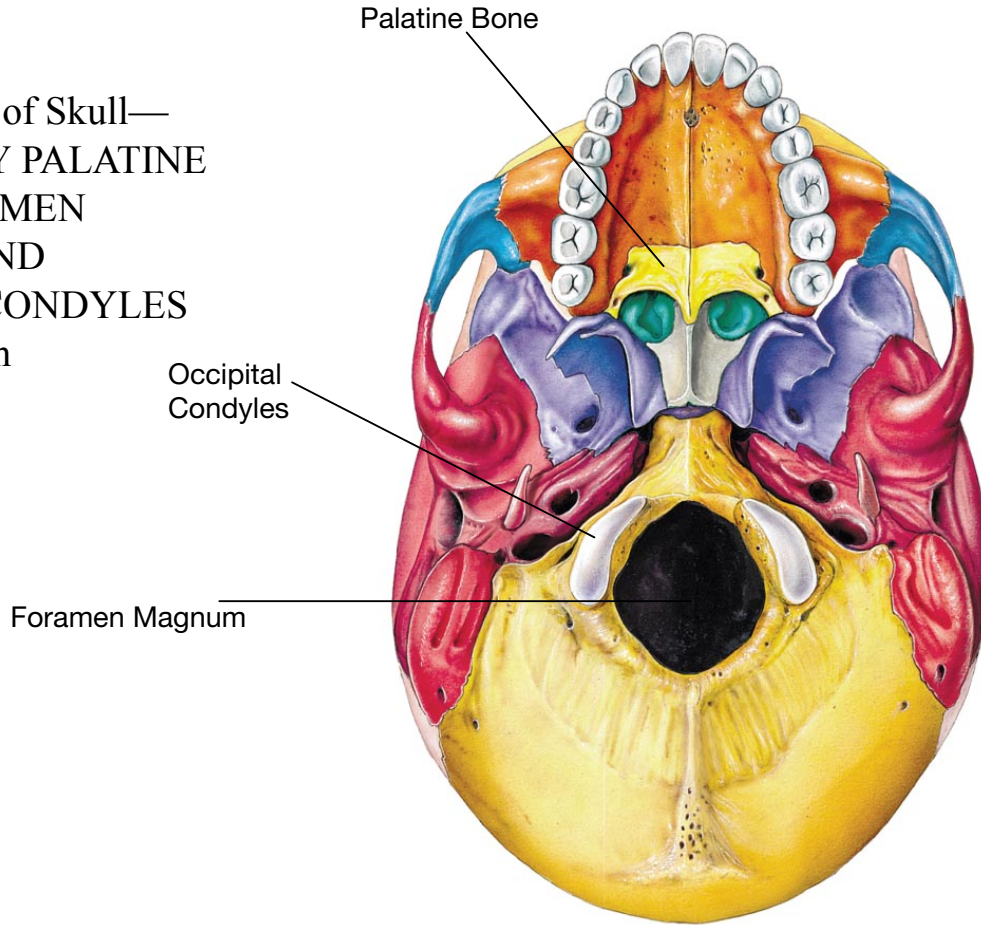


Lateral View of Skull—

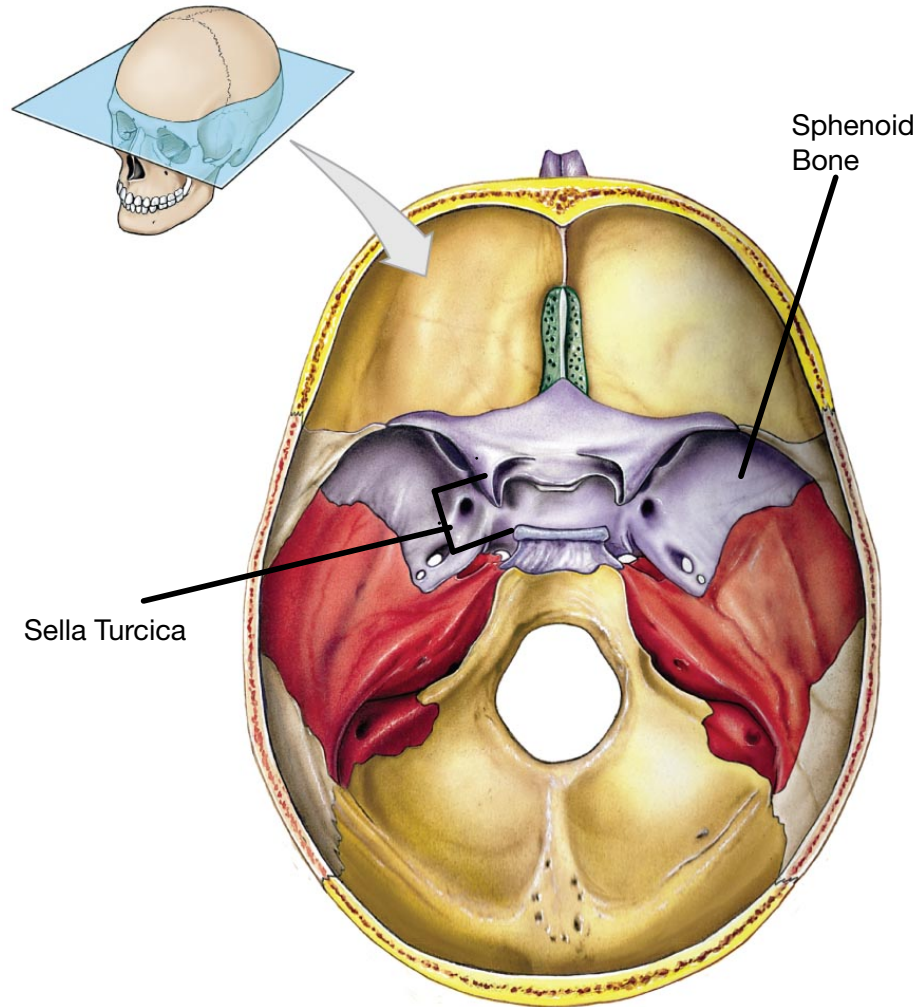
LABEL: SPHENOID BONE, ZYGOMATIC BONE, ZYGOMATIC PROCESS, MASTOID PROCESS, EXTERNAL ACOUSTIC MEATUS AND TEMPOROMANDIBULAR JOINT on this diagram



**Inferior View of Skull—
LABEL ONLY PALATINE
BONE, FORAMEN
MAGNUM AND
OCCIPITAL CONDYLES
on this diagram**

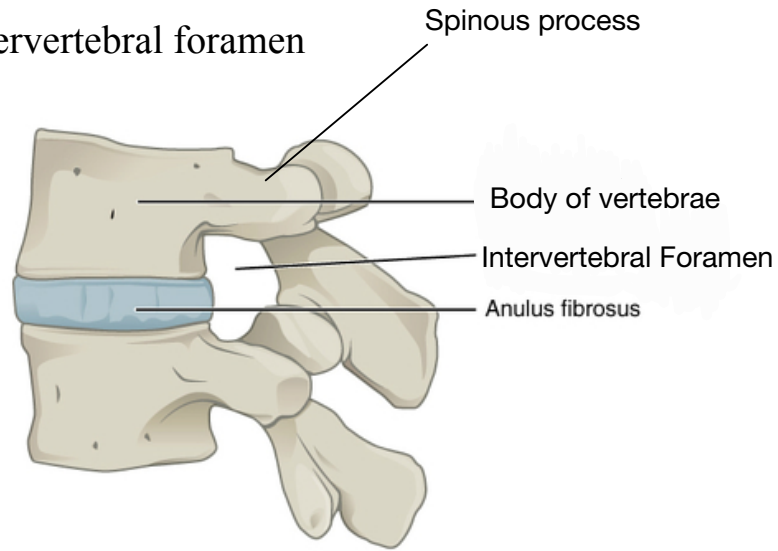


Superior View of
Skull with top
removed—LABEL
**ONLY SPHENOID
BONE AND SELLA
TURCICA ON THIS
DIAGRAM**



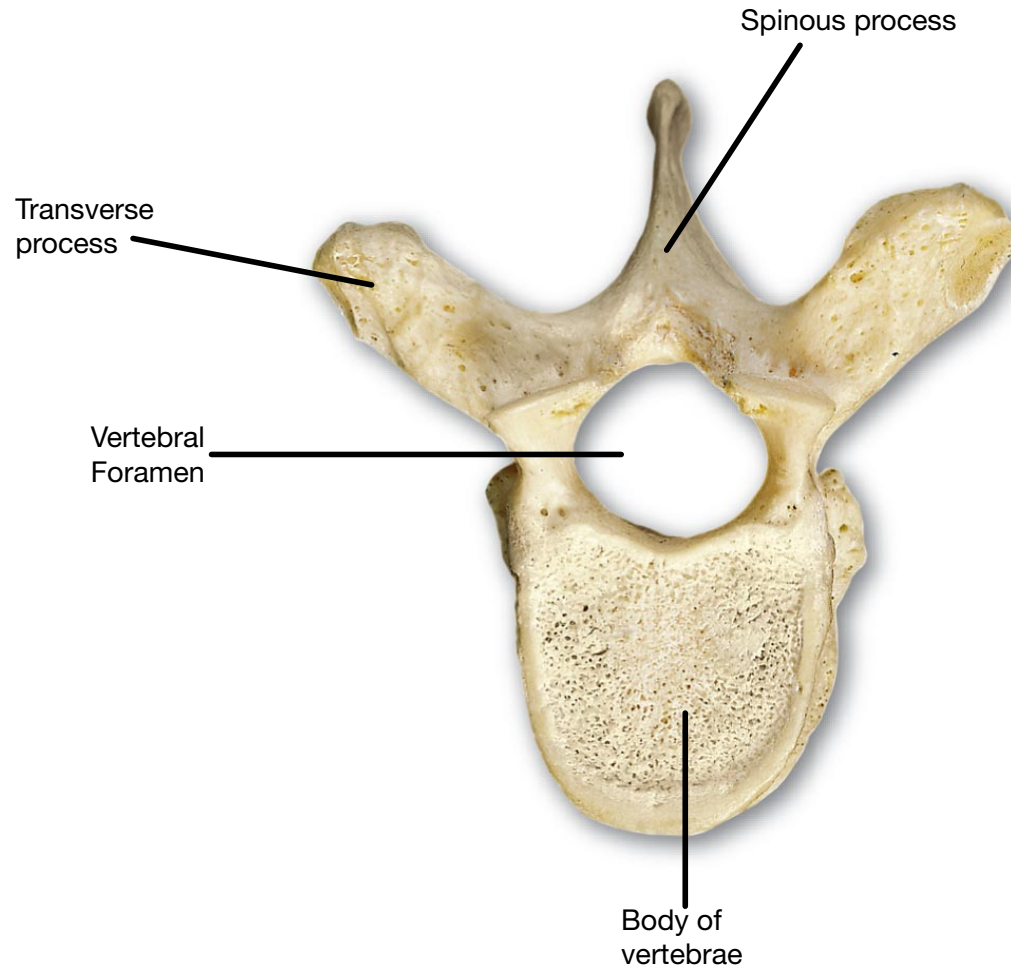
Label:

Body of vertebrae, spinous process and intervertebral foramen



Lateral view

Label: body of vertebrae, vertebral foramen,
transverse process, spinous process



Label all parts of sternum and acromioclavicular joint on this diagram

Scapula
Acromioclavicular Joint

Ribs

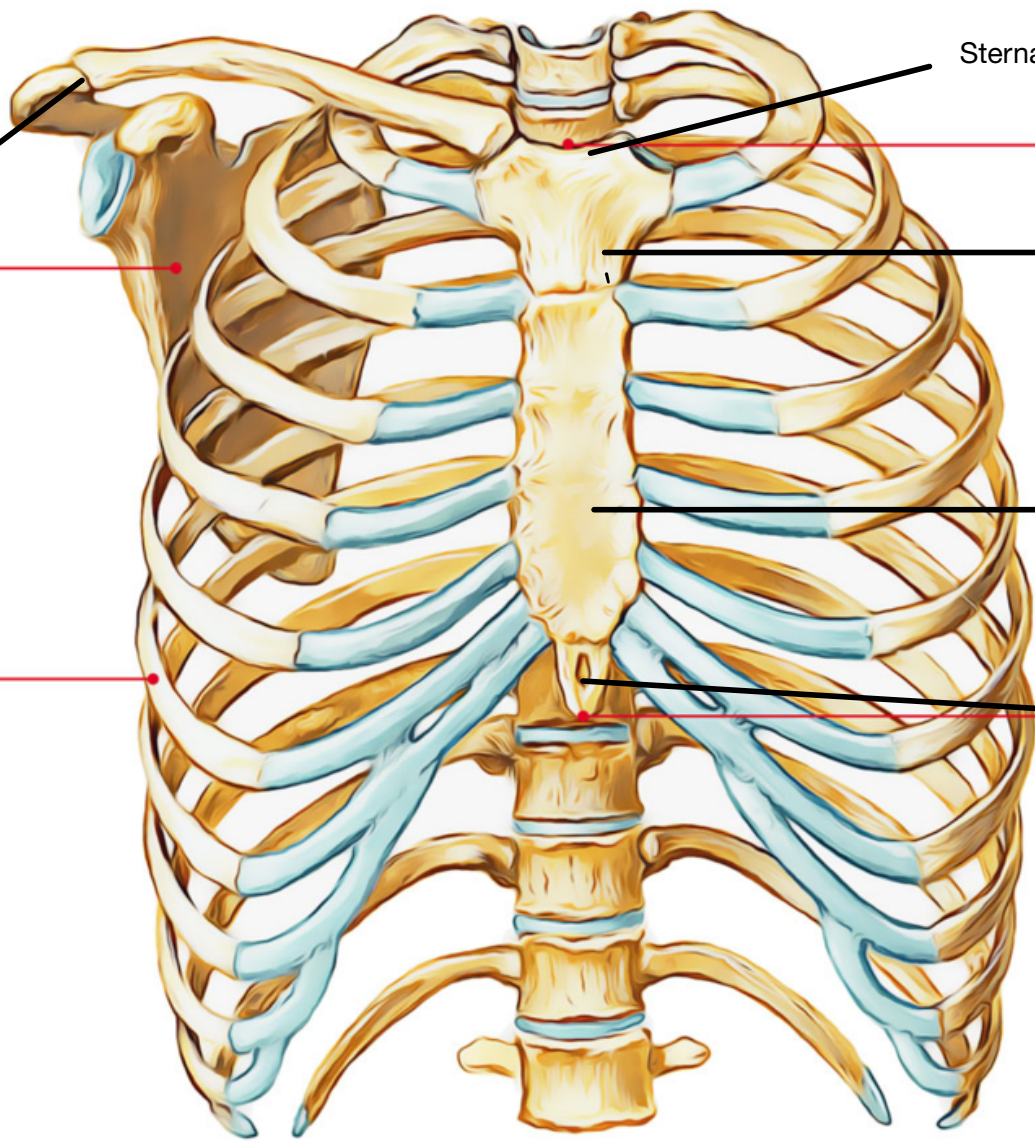
Sternal Notch

Manubrium

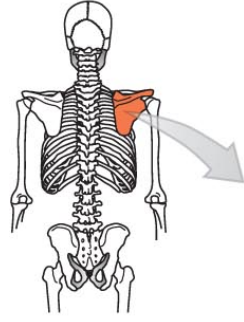
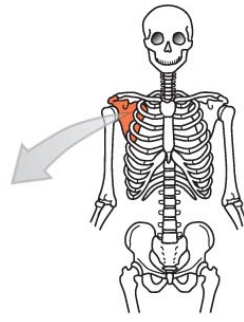
Sternum

Body

Xiphoid Process

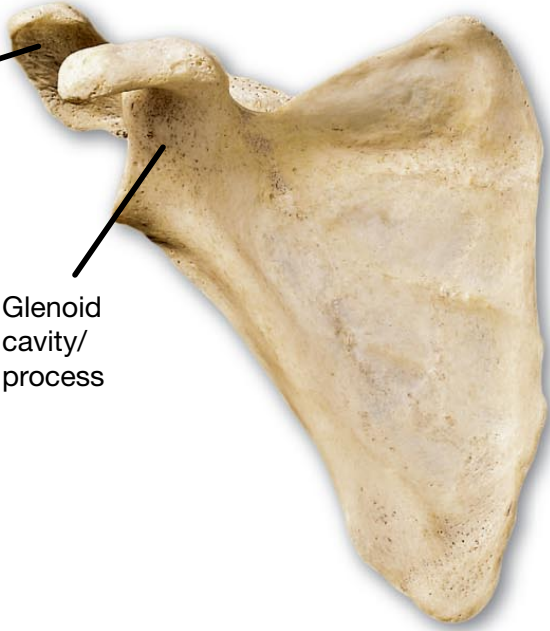


Label all scapula structures on this diagram



Acromion

Glenoid cavity/
process



Anterior view

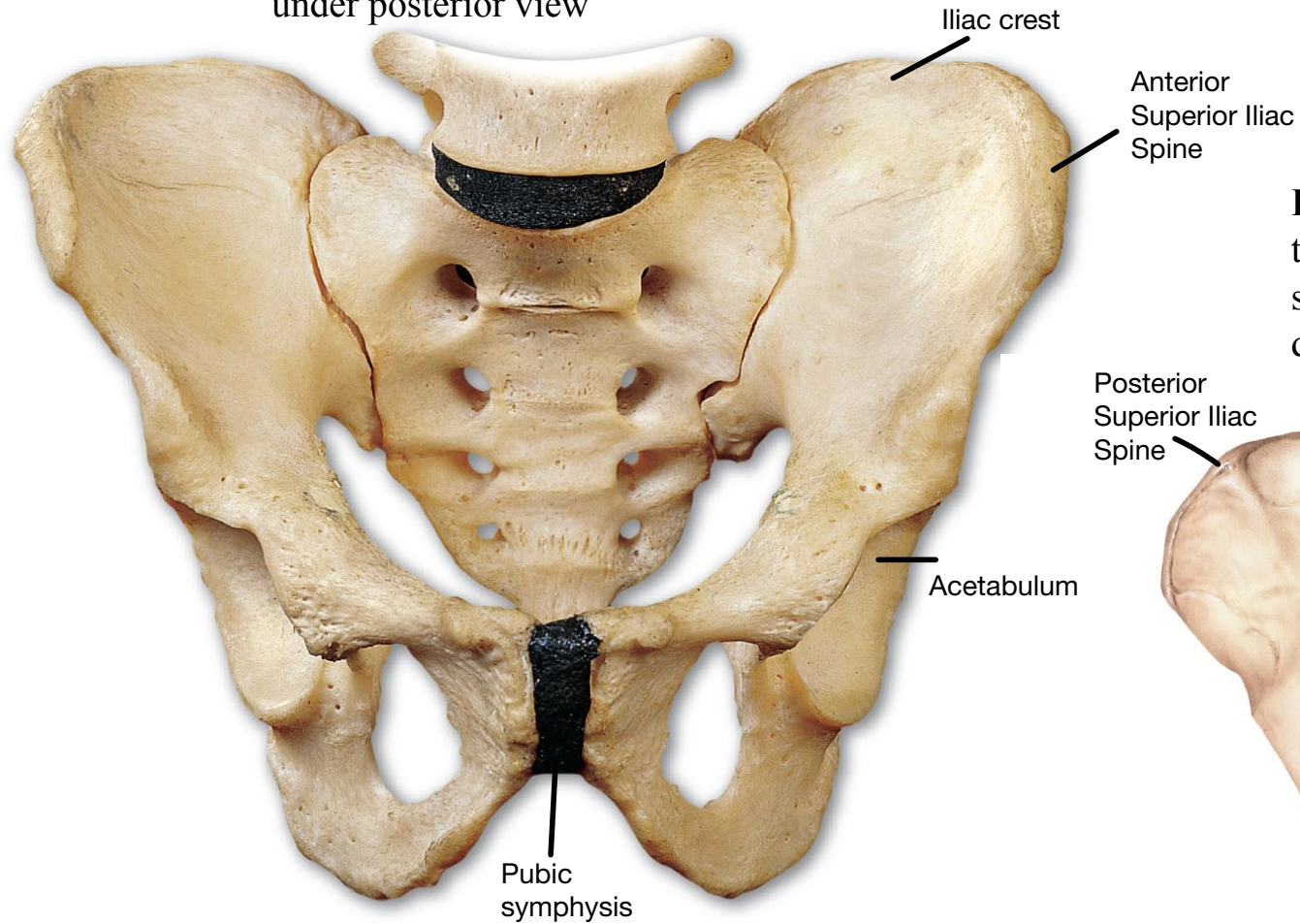
Spine

Coracoid
process



Posterior view

ANTERIOR VIEW—label all pelvis structures **except** those listed under posterior view



Posterior view—Label ONLY ischial tuberosity, posterior superior iliac spine and sacral foramina on this diagram

